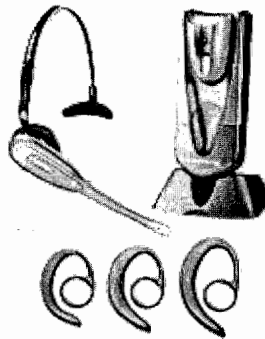




WARNING!
You Must Run the Audio Setup Wizard
Before using any new microphone

Plantronics CS50-USB Headset Instructions

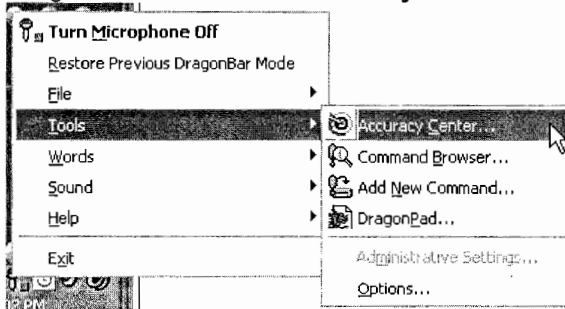


1. Start by unwrapping all of the parts.
2. Push the USB plug through the large hole in the base (part with 2 brass fixtures). You'll thank us later for this tip.
3. Insert the charger (cradle) into the base. It should snap into place.
4. Plug the USB Plug into any available USB port on your computer. We recommend against using USB Hubs or front USB ports on desktop systems for shielding reasons. Windows should automatically find and install the appropriate drivers. No Install CD or Web surfing required!
5. The CS50-USB includes 3 ear hoops in varying sizes. We recommend losing them as soon as possible as we found them to be rather uncomfortable! We think you will find the Headset, which can be snapped into place for left or right side use, to be more secure and comfortable.
6. You can mute and un-mute the CS50-USB by pushing the black volume knob inward.
7. For speech-recognition purposes we recommend adjusting the headband to its smallest setting and set it on top of your head with the microphone positioned just above your ear. Simply point the microphone down towards your mouth. It will work fine in this position and you will probably find it more comfortable to NOT have the speaker pressing against your ear. If you decide to use the CS50-USB for VoIP you can extend the headband so that the speaker rests on your ear.
Note: Some of our clients also like wearing the microphone in front of their ear. Both positions work well for speech-recognition.

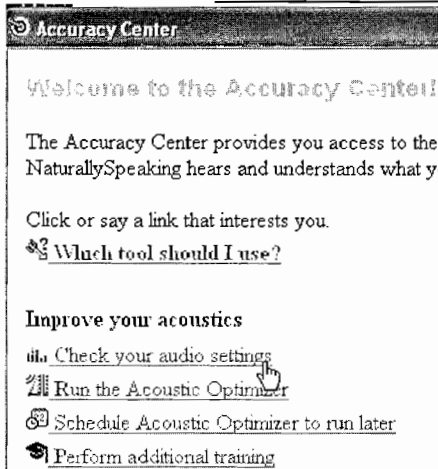
The CS50-USB microphone has been known to occasionally lose its connection (pairing). If your microphone suddenly stops working simultaneously press and hold, for 5 seconds, the silver button on the side of the microphone and the black wheel button by the speaker. You will need to press the black wheel button towards the silver button (do not rotate up or down). Then re-insert the microphone back into the charging cradle for 2 seconds. This should re-establish the connection. If pairing fails you may need to re-initialize the unit by inserting a pin or paper clip into the reset hole on the back of the base station (just above the Plantronics CS50-USB label).

Before using your new wireless USB microphone you will need to run NaturallySpeaking's Audio Setup Wizard.... See Page 2

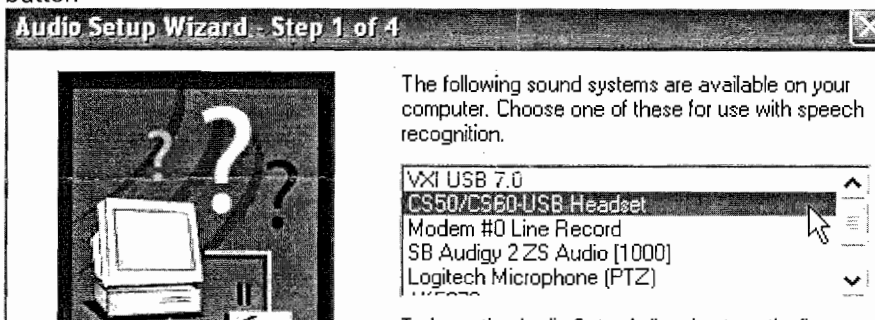
1. Start by Right-Mouse-Clicking on the microphone in the Taskbar. You may optionally Click the Dragonbar menu **Tools/Accuracy Center**



2. Left-Mouse-Click Check your audio settings as follows:



3. Choose **CS50/CS60-USB Headset** as your sound source in Step 1 of 4 and then click the **Next** button



4. Simply follow the remaining prompts to complete setting up your new sound system and enjoy!

You can download a complete CS50-USB manual at http://www.plantronics.com/media/media_resources/literature/user_guides/CS50USB_UserGuide_EN.pdf

© KnowBrainer 1996 - 2006